

HP Internet Advisor Series

Quickly isolate datacom problems with the HP Internet Advisor Series. Portable, integrated, and rugged, the Internet Advisor Series give you the best combination of value and performance available.

Integrated Monitoring and Analysis—Under One Handle

- LAN, WAN, and ATM testing all under one handle
- LAN monitoring and analysis for Ethernet, token-ring, and FDDI—vital signs, commentators, statistics, and decodes for intelligent problem solving
- Complete WAN testing from 50 bps to 2 Mb/s—optional ATM to DS3/E3 rates
- BERT to 45 Mb/s
- Terminal emulation
- Traffic generation
- Industry-standard analog transmission impairment measurement (TIMS) capability to 200 kHz
- Optional expansion undercradle to add two PC-AT cards
- Small, lightweight, portable package

Unparalleled Ease of Use

- HP Toolkit—press one key to solve problems; user customizable
- Prewritten tests for all major protocols, including LAN traffic analysis over WAN
- Customizable data/decode displays
- Customizable statistical analysis
- Built-in Help

Additional features

- Standard three year warranty
- Free application Helpline
- Worldwide service and support

Built-in, fully integrated 486 personal computer¹

- Intel80486 DX4, 100 MHz processor, 16 MB PC memory
- 256 MB hard drive standard, 512 MB optional
- 1.44 MB flexible disk drive
- PCMCIA (Type I/II) slot for modem, NIC, memory, etc.
- Integral mouse
- Serial and parallel ports
- Optional modem (HP J2301B only)
- Standard 10.4-inch passive color VGA display, optional 10.4-inch active matrix VGA display

Ordering Information

HP J2300A HP Internet Advisor—WAN 64 kb/s WAN Analyzer

- Opt 001 Fax Modem (14.4 kb/s) (U.S. only)
- Opt 002 Adds Katakana Character Set

HP J2301B T1 Internet Advisor

- Opt 001 Fax Modem (14.4 kb/s) (U.S. only)
- Opt 002 Adds Katakana Character Set
- Opt 200 Extended Buffer/DS3/CEPT-E3 ATM capture ready
- Opt 203 RJ-45 Connectors (Japan)
- Opt 220 512 MB Hard Drive
- Opt 221 10.4-inch Active Matrix Color Display

HP J2302B E1 Internet Advisor

- Opt 200 Extended Buffer/DS3/CEPT-E3 ATM capture ready
- Opt 201 BR2 Connectors
- Opt 220 512 MB Hard Drive
- Opt 221 10.4-inch Active Matrix Color Display

HP J2509A Mainframe Upgrade of HP J2301A/02A to DX4/PCMCIA

HP J2527A TIMS Undercradle

- Opt 001 ITU-T Version

HP E4594A Telco T-Carrier Undercradle

HP E4592A Voice Frequency Testing Slide-In Module for HP E4594A

HP J2306B Ethernet Undercradle for HP J2301A/B or HP J2302A/B

HP J2309B Ethernet/Token-Ring Undercradle for HP J2301A/B or HP J2302A/B

HP Internet Advisor—ATM

HP J2909A ATM DS3 Slide-In Module and ATM Advisor Software for HP J2301B or HP J2302B

HP J2910A ATM CEPT-E3 Slide-In Module and ATM Advisor Software for HP J2301B or HP J2302B

HP J2915A ATM Advisor Software—T1/E1 Analysis

HP J2916A DS3 Undercradle and ATM Advisor Software

HP J2917A CEPT-E3 Undercradle and ATM Advisor Software

HP Internet Advisor—LAN

HP J2522B Ethernet Advisor

- Opt 208 Adds Internet Reporter for LAN
- Opt 220 512 MB Hard Drive
- Opt 221 10.4-inch Active Matrix Color Display

HP J2523B Ethernet/Token-Ring Advisor

- Opt 208 Adds Internet Reporter for LAN
- Opt 220 512 MB Hard Drive
- Opt 221 10.4-inch Active Matrix Color Display

HP J2510A Mainframe Upgrade of HP J2522A/23A to DX4/PCMCIA

HP J2524A FDDI Undercradle (with 32 MB buffer memory standard) for HP J2522A/B, J2523A/B, or J2302A/B

HP Internet Reporter

HP J2531A Internet Reporter for LAN

HP J3306A Internet Reporter for WAN

HP J3307A Internet Reporter for LAN and WAN

PC Card Solutions

HP 4957PC V-Series/64 kb/s WAN Protocol Analyzer Card and Software

HP J2260A Ethernet Protocol Analyzer PC Card and Software

HP J2261A Token-Ring Protocol Analyzer PC Card and Software

¹ PC specifications differ for the 64 kb/s WAN analyzer. Intel80486 is a U.S. trademark of Intel Corporation

PROTOCOL ANALYZERS

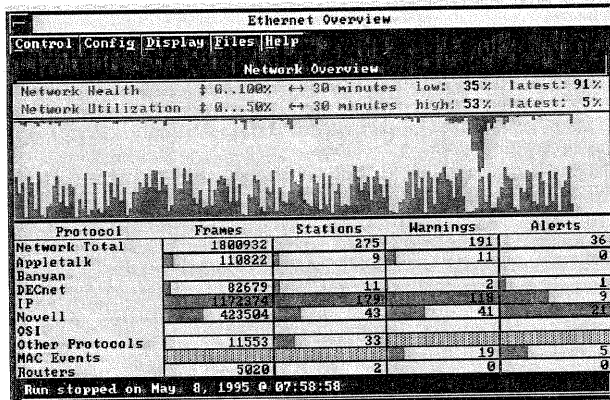
HP Internet Advisors—LAN/WAN/ATM (cont'd)

HP Internet Advisor—LAN

The Ethernet Advisor, Ethernet/Token-Ring Advisor, and the FDDI Advisor combine uncompromised monitoring and analysis with a powerful, rugged 486 PC - all in a lightweight, easy-to-carry package with an unprecedented low price.

- Ethernet, token-ring, and FDDI under one handle—weighing less than 18 pounds
- Expert commentators and vital signs measurements for intelligent data analysis
- Extensive statistical measurements of MAC (Media Access and Control), network, and application layer protocols
- RISC-based data acquisition systems with programmable hardware filtering for 100% data capture performance under any traffic load
- Multitasking capability allows any combination of measurements to run simultaneously
- Preconfigured stimulus/response tests for powerful, active testing
- Automatic node discovery process to generate friendly node names, identify routers, and isolate duplicate addresses

The Expert Advisor



The Expert Advisor provides a single screen, real-time display of network health and performance. Network health is the weighted sum of all errored frames, including warning and alert events generated by the Expert Commentator, expressed as a percent of total network traffic. Measurement data is categorized by protocol stack so that you can quickly drill down to specific protocols and identify network problems.

Protocol Decodes

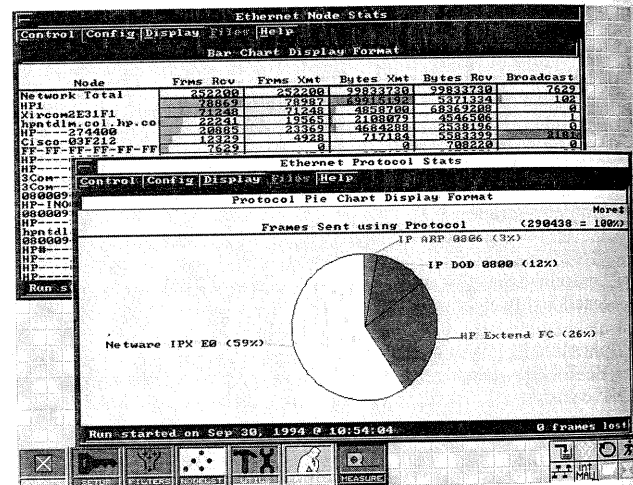
- Complete decoding of all major protocol stacks in summary, detail, and hexadecimal formats
- Decodes follow conversations to provide packet sequencing information and automatic detection of protocol syntax errors
- Network stack decodes provide a complete view of all fields of all major protocols
- View only the information that is important to you; choose a specific protocol stack or even a single protocol layer, if needed

Expert Commentators and Vital Signs

- Intelligent statistics and Expert Commentators automatically reduce thousands of data packets to a handful of significant events
- Available for Novell, TCP/IP, AppleTalk, Banyan VINES, OSI, and DECnet protocol stacks running on Ethernet, token-ring or FDDI networks
- Thresholds stop capture process and generate alarms for analysis of difficult intermittent problems
- Configurable to allow enabling or disabling of events, to control the data capture process, and to customize threshold levels for your network

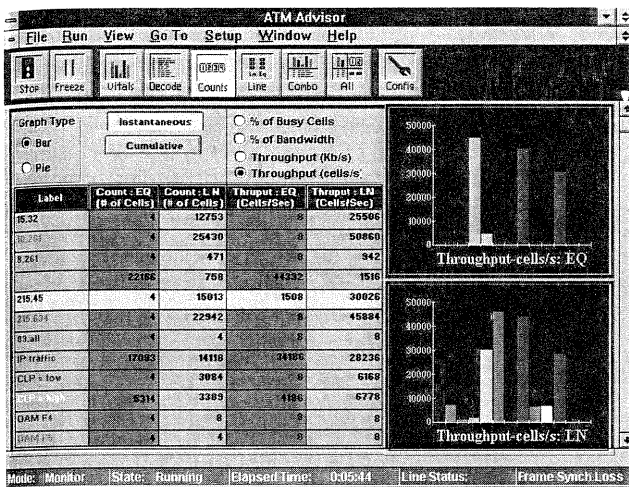
Network Performance Analysis

- Statistically measure network or node performance, protocol utilization, and frame length distribution
- Log all statistics measurements to disk to provide network performance details for troubleshooting and planning
- Gather data for up to 41 MAC level parameters for sample periods as often as every second
- Node statistics include utilization, errors, and status
- Protocol statistics include network utilization and up to 20 protocols at data link, network, and transport layers
- Frame length statistics gathered for the entire network and for up to 20 protocols individually



Network traffic can be analyzed by source/destination node, by protocol, or by frame length. Statistical data can be logged to disk while running, completely characterizing network performance, traffic level, and error rates. The HP Internet Reporter can then be used to create high-quality, graphical reports of network baseline data.

See page 437 for Ordering Information and Specifications.



HP Internet Advisor—WAN/LAN

The T1 Internet Advisor and CEPT-E1 Internet Advisor integrate all your testing requirements—WAN, LAN, ATM, ISDN, Telco T-carrier and analog T1MS—in a portable, rugged package.

Internet Advisors combine a complete protocol analyzer for WAN, LAN and ATM for internetwork monitoring and analysis, simulation, and a complete bit-error-rate test set with a powerful, rugged personal computer in a low-priced, compact package. With Internet Advisors, you get the best combination of price and performance available in the data-com test industry.

Quickly Isolate and Identify Network Problems at the Press of a Single Key

- Check/identify router and bridge configuration problems
- Determine types of traffic routed over the WAN
- Determine bandwidth being used. Do you need more lines or greater bandwidth, or do you have too much bandwidth and could reduce costs?
- Determine who is generating inappropriate traffic

Full-Featured Test Solution

- All major interfaces built in; test from 50 b/s asynchronous to 45 Mb/s synchronous
- Test ATM networks at the DS1, DS3, CEPT-E1, and CEPT-E3 rates with full monitor and simulation capabilities
- Full monitor and decode of major protocols over any channel, fractional channel, or full T1 or CEPT-E1
- Simulation of X.25, frame relay, HDLC, and proprietary bit-oriented protocols to 2.048 Mb/s
- Complete English decodes with customizable displays
- Real-time statistical analysis, including LAN traffic analysis over WAN
- Guaranteed 100% data-capture performance during full line loading; Capture to 30 MB buffer (optional)
- Simultaneous decodes, statistics, triggers, filters, and simulation; toggle between statistics and data displays real time, and never miss an event
- Full-function BERT (bit-error-rate tests) including DS1, DS3, CEPT-E1, and CEPT-E3
- Log results to hard disk—statistics, LAN traffic analysis, frame types, errors, etc.
- Remote control and PC data analysis

HP Telco T-Carrier Undercradle

The HP Telco T-carrier undercradle adds extensive physical test capability to the HP Internet Advisor.

- Bridge tap, multipattern, and intelligent repeater test patterns
- SCL 96 (Tr TSY - 000008) testing
- PRM messaging
- Dual transmitters and receivers with drop and insert of internal patterns and tones

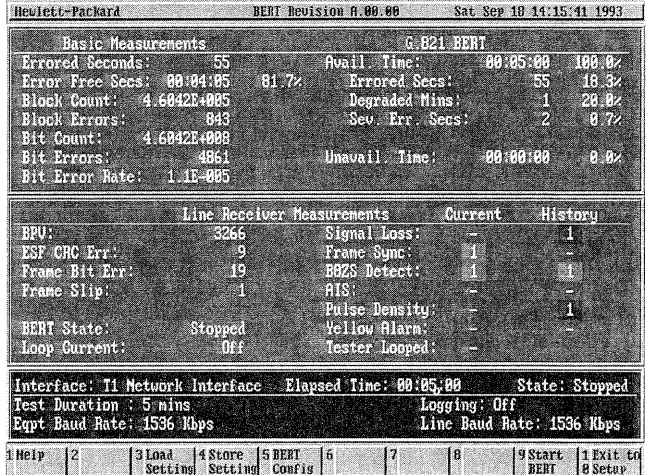
Measurements

- Signal level
- Frequency
- Frame slips
- Display signaling bits
- Bit error, errored seconds
- BPVs, frame errors, density violations, sync losses

Baselining with HP Internet Reporter for WAN/LAN

The HP Internet Reporter for WAN/LAN is a complete network baselining and reporting application for the HP Internet Advisor.

- Produce comprehensive snapshot of health and performance of your LAN or internetworking WAN links
- Monitor line quality over time, including T1/E1 transmission errors, errored user frames, and bit error rates (BERT)
- Monitor traffic patterns and bandwidth utilization for the entire LAN segment or WAN link, by LCN or DLCL, or by encapsulated LAN protocol
- Generate professional quality reports to justify service upgrades or document the impact of topology changes



BERT capability eliminates the need to carry several test tools on support visits. Quickly measure the quality of your data circuits and identify network faults.

See page 437 for Ordering Information and Specifications.