

Agilent 33330B/C Coaxial Detectors for OEM and Systems Use

Technical Overview

General Information

The Agilent Technologies 33330B/C Series of broadband coaxial detectors are specifically designed for use in microwave instrumentation and systems applications such as the detecting element in leveling loops, power monitoring, and as wideband video detectors.

These detectors utilize a Low Barrier Schottky (LBS) diode that requires no bias, has exceptional broadband flatness and low SWR, and is environmentally rugged. For measurement accessory applications, Agilent offers similar RF performance with a variety of input and output connectors in the Model 423B, 8470B, and 8472B Series.

The Low Barrier Schottky diode detector

The 33330B/C detectors consist of a Low Barrier Schottky (LBS) diode and a miniature thin film circuit



that matches the diode to a 50-ohm transmission line. The diode is a specially fabricated Schottky diode using metalization designed to achieve low origin resistance, thus eliminating the need for bias. In addition to superior RF characteristics, the LBS detector offers significant advantages over other types of detectors. For example, a typical Schottky requires bias for proper operation; a tunnel diode detector has a limited power range because of its negative resistance region; and the point contact diode, because of its fragile construction, is unsuitable for many field applications.

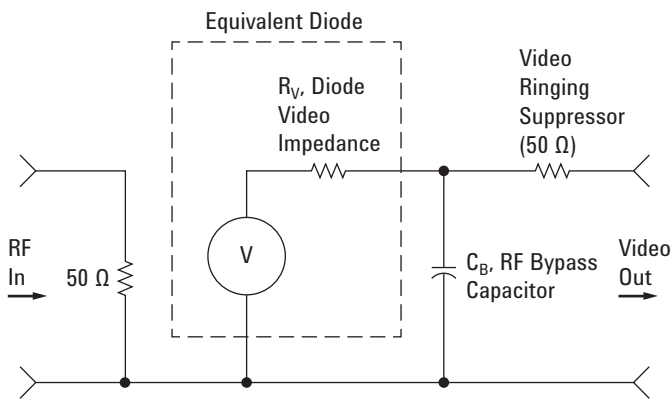
Frequency Range

- Broadband (0.01 to 26.5 GHz)
- Excellent flatness (± 0.6 dB to 18 GHz)
- Low SWR (< 1.5 to 18 GHz)
- Environmentally rugged (MIL-STD 883 tests)
- Field replaceable diode modules
- APC 3.5-mm connector (reliable, SMA compatible)
- Low Barrier Schottky diode (no bias required)



Since only metallurgical bonds are used with the diode, the detectors are extremely rugged. As noted on page 4, the detectors have undergone extensive environmental testing to MIL-STD 883 procedures, an important factor in military systems applications. The detector can also withstand high RF power levels for short durations without burnout, important for power monitoring applications. For example, it can typically withstand 1 watt CW for a minute without permanent damage.

The equivalent circuit and pulse response equations for the 33330B/C detectors are shown in Figures 1 and 2, and extensive data on the performance of the detectors is given on page 3. Using this information, the user can select a load to extend the square law region to higher power levels or to minimize the output variation over a given temperature range.



Typical Values:

$$R_V \text{ (Diode Video Impedance)} \cong 1.3 \text{ k}\Omega^*$$

$$C_B \text{ (RF Bypass Capacitor)} \cong 30 \text{ pF nominal}$$

$$T_R \text{ (10 to 90\% Risetime)} \cong 2.2 \frac{(R_{LOAD})(R_V)}{R_{LOAD} + R_V} (C_B + C_{LOAD})$$

* @ 25 °C and $P_{IN} < -20 \text{ dBm}$ (see Figure 7)

Figure 1. Equivalent circuit for the Agilent 33330B/C detectors with typical parameter values

Excellent broadband flatness

The thin film input matching circuit was optimized for flat frequency response and low SWR, which yields improved performance in leveling loops and power monitoring applications. Use of thin film fabrication techniques for the circuit and diode results in excellent unit-to-unit repeatability of performance, and thus matched pairs will track within a few tenths of a dB over the entire frequency range (see Figure 2). This feature is especially important in the 20 to 26.5 GHz frequency range where diode capacitance causes the sensitivity to decrease by 3.3 dB, yet this “roll off” characteristic is very repeatable and matched pairs will track within $\pm 0.5 \text{ dB}$.

Low SWR

The miniature thin film circuit used provides an excellent 50-ohm match

to the transmission line, which minimizes reflections that cause frequency response ripple and power measurement inaccuracies. Such errors can be significant. For example, using a detector with an SWR of 2.5:1 in an application with a 2:1 source match can result in more than a $\pm 1.3 \text{ dB}$ ripple. For the same source match of 2:1, a typical 33330B detector with SWR less than 1.25 would have less than $\pm 0.4 \text{ dB}$ ripple.

APC 3.5-mm connector improves performance and extends frequency range

The Agilent 33330B/C detectors use the APC-3.5 connector, which is compatible with the industry standard SMA but is more rugged and offers improved repeatability over hundreds of connections. Use of this connector extends the frequency range of the 33330C to 26.5 GHz.

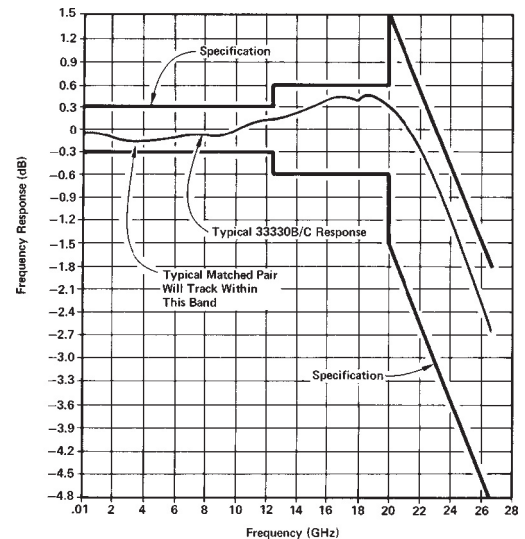


Figure 2. Typical frequency response of the Agilent 33330B/C detectors

Detector Performance Characteristics

Typical transfer characteristics

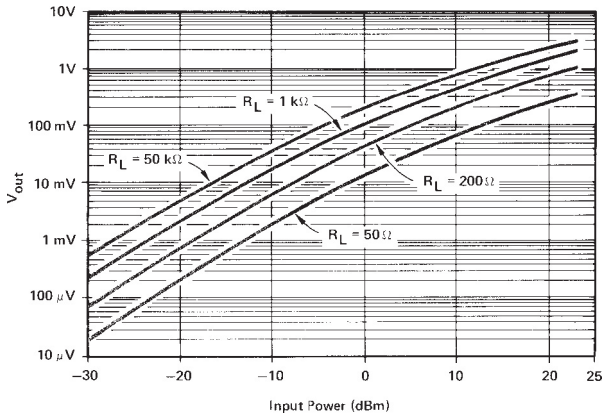


Figure 3. Typical transfer characteristics ($T_a = 25^\circ\text{C}$)

Typical temperature characteristics

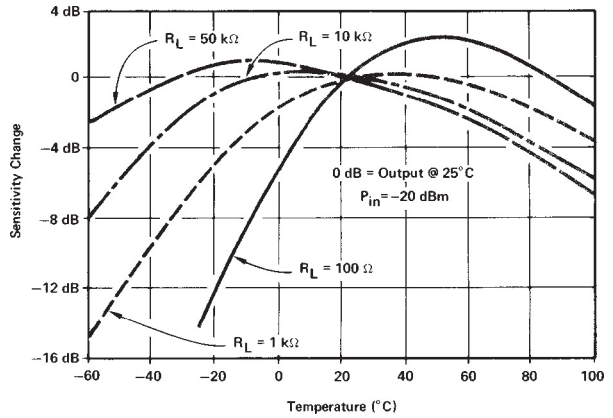


Figure 6. Typical output response with temperature ($P_{in} < -20 \text{ dBm}$)

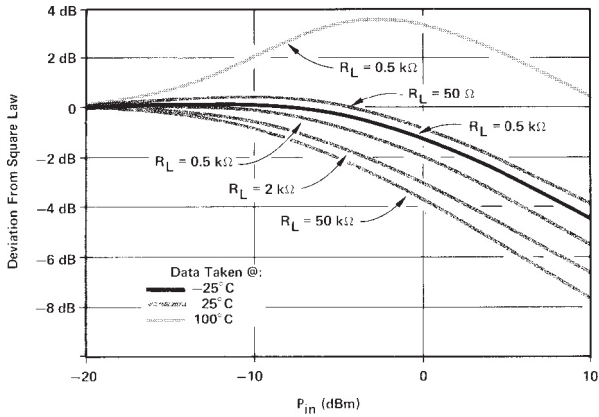


Figure 4. Typical square law deviation

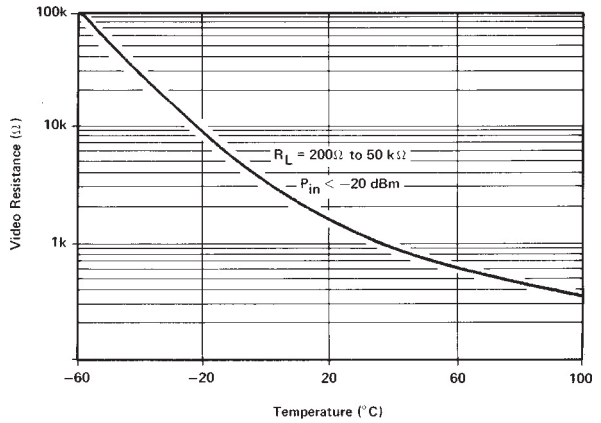


Figure 7. Typical video impedance variation with temperature

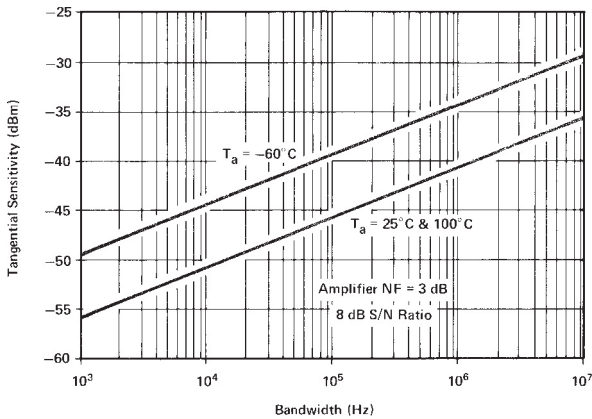


Figure 5. Typical tangential sensitivity

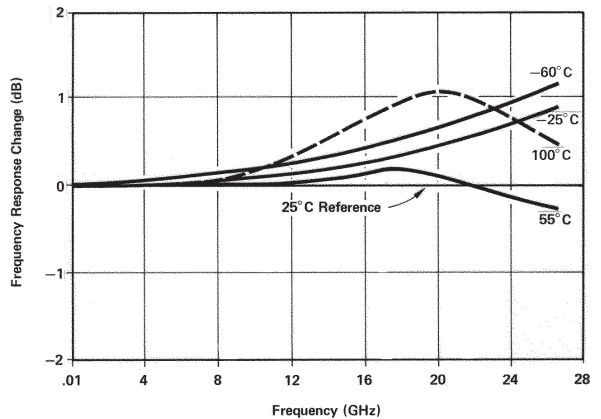


Figure 8. Typical frequency response variation with temperature

Specifications¹

	33330B	33330C
Frequency range²	0.01 to 18 GHz	0.01 to 26.5 GHz
Frequency response		
Octave band flatness	±0.2 dB over any octave to 8 GHz	±0.2 dB over any octave to 8 GHz
Broadband flatness	0.01 to 12.4 GHz: ±0.3 dB 0.01 to 18 GHz: ±0.6 dB	0.01 to 12.4 GHz: ±0.3 dB 0.01 to 20 GHz: ±0.6 dB 20 to 26.5 GHz: ±1.5 dB from a -3.3 dB linear slope
SWR	0.01 to 4 GHz: 1.2 0.01 to 18 GHz: 1.5	0.01 to 4 GHz: 1.2 4 to 18 GHz: 1.5 18 to 26.5 GHz: 2.2
Low level sensitivity	> 0.5 mV/μW	0.01 to 18 GHz: > 0.5 mV/μW 18 to 26.5 GHz: > 0.18 mV/μW
Maximum operating input	200 mW	200 mW
Typical short-term maximum input (less than 1 minute)	1 watt (typical)	1 watt (typical)
Noise (μV peak to peak with CW power applied to produce 100 mV output, 400 kHz BW)	< 50 μV	< 50 μV
Output polarity	Negative (default Option 301), Positive (Option 003)	
Matched response³	0.01 to 12.4 GHz: ±0.2 dB 0.01 to 18 GHz: ±0.3 dB	0.01 to 12.4 GHz: ±0.2 dB 0.01 to 18 GHz: ±0.3 dB 0.01 to 26.5 GHz: ±0.5 dB

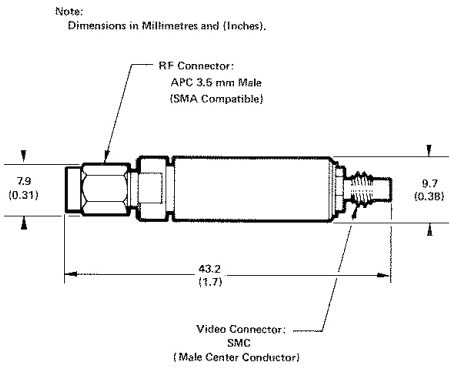
1. Measured at 25 °C and < -20 dBm unless otherwise specified.

2. Below 1 GHz RF may leak through the video connector. If objectionable, this may be eliminated with a low pass filter.

3. Option 001 must be ordered for each matched pair. Default option is Option 101, no matched pair.

Field replaceable diode modules

In the event of diode burnout, the detector module can be replaced in the field. Since the replacement module includes the tested and sealed assembly of diode and thin-film matching circuit, the user is assured of performance to specifications. This offers an advantage over detector designs where only the diode is replaced and not tested in its final assembly.



Outline drawing

Model number	Description	Replacement module part number
33330B Option 301	Negative polarity	33330-80003
33330B Option 001	Matched pair (negative)	33330-80004
33330B Option 003	Positive polarity	33330-80005
33330C Option 301	Negative polarity	33330-80006
33330C Option 001	Matched pair (negative)	33330-80007
33330C Option 003	Positive polarity	33330-80008

Mechanical information	
RF connector	APC-3.5 male (SMA compatible)
Output connector	SMC (male center conductor)
Net weight	14 g (0.5 oz)



myAgilent

www.agilent.com/find/myagilent

A personalized view into the information most relevant to you.

Agilent Channel Partners

www.agilent.com/find/channelpartners

Get the best of both worlds: Agilent's measurement expertise and product breadth, combined with channel partner convenience.



Agilent Advantage Services is committed to your success throughout your equipment's lifetime. To keep you competitive, we continually invest in tools and processes that speed up calibration and repair and reduce your cost of ownership. You can also use Infoline Web Services to manage equipment and services more effectively. By sharing our measurement and service expertise, we help you create the products that change our world.

www.agilent.com/find/advantageservices



www.agilent.com/quality

www.agilent.com
www.agilent.com/find/mta

For more information on Agilent Technologies' products, applications or services, please contact your local Agilent office. The complete list is available at: www.agilent.com/find/contactus

Americas

Canada	(877) 894 4414
Brazil	(11) 4197 3600
Mexico	01800 5064 800
United States	(800) 829 4444

Asia Pacific

Australia	1 800 629 485
China	800 810 0189
Hong Kong	800 938 693
India	1 800 112 929
Japan	0120 (421) 345
Korea	080 769 0800
Malaysia	1 800 888 848
Singapore	1 800 375 8100
Taiwan	0800 047 866
Other AP Countries	(65) 375 8100

Europe & Middle East

Belgium	32 (0) 2 404 93 40
Denmark	45 45 80 12 15
Finland	358 (0) 10 855 2100
France	0825 010 700*
	*0.125 €/minute
Germany	49 (0) 7031 464 6333
Ireland	1890 924 204
Israel	972-3-9288-504/544
Italy	39 02 92 60 8484
Netherlands	31 (0) 20 547 2111
Spain	34 (91) 631 3300
Sweden	0200-88 22 55
United Kingdom	44 (0) 118 927 6201

For other unlisted countries:

www.agilent.com/find/contactus

Revised: October 11, 2012

Product specifications and descriptions in this document subject to change without notice.

© Agilent Technologies, Inc. 2013-2014
Published in USA, May 22, 2014
5952-8164E



Agilent Technologies