

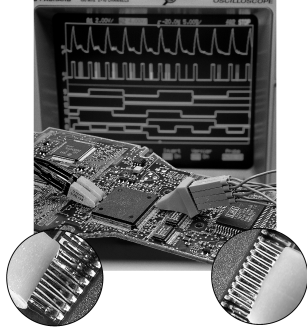
# Oscilloscope Probes & Accessories

122

## Surface-Mount Probing Accessories

HP 10467-68701  
HP 10075A  
E2613A  
E2613B  
E2614A  
E2615A  
E2615B  
E2616A

- Easy connection to 0.5mm, 0.65 mm TQFP and PQFP packages
- Reliable contact with little chance of shorting to adjacent pins
- Mechanically noninvasive
- Can be inserted while the board is active
- 3, 8, and 16-signal versions



4

At one end, Wedge conductor segments are inserted into the space between IC pins; at the other end, they easily connect to scopes and logic analyzers.

### HP Wedge Probe Adapter

NEW

#### Precise problem-free probing

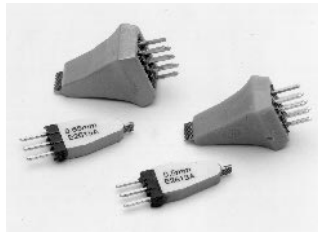
The HP Wedge probe adapter solves the problem of connecting your scope or logic analyzer to fine pitch thin quad flat pack (TQFP) and plastic quad flat pack (PQFP) surface mount ICs. It provides accurate, mechanically noninvasive and reliable electrical contact to 0.5 and 0.65 mm IC packages, with little chance of shorting. It is available in 3-, 8-, and 16-signal versions.

#### Easy to insert, then stays put

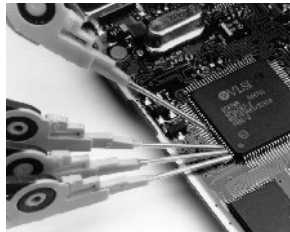
It works by inserting compressible dual conductors between adjacent IC pins. The flexible conductors conform to the size and shape of each leg to ensure tight contact. It's then a simple matter to connect your scope or logic analyzer to the HP Wedge.

#### Electrical reliability

The HP Wedge's unique design delivers secure redundant contact on each pin, with little chance of shorting to adjacent pins. The redundant physical connection created by two contact points on each pin of the IC and its short electrical length dramatically increases the reliability of the electrical connection. Since the HP Wedge doesn't latch directly onto the IC and doesn't require expansion beforehand (as a clip does), it can be inserted while the board is active. Plus, its mechanically noninvasive so it won't damage your device under test.



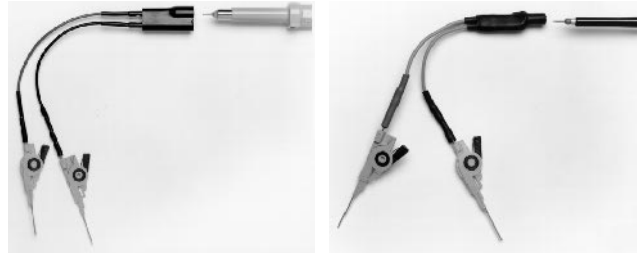
3- and 8-signal versions for 0.5 and 0.65 mm IC Packages



10467-68701 0.5 mm IC Clips

### 0.5 mm IC Clips

These IC clips are the smallest in the industry to date and are suitable for connecting to PQFP and SOIC SMT packages from 0.5 – 0.8 mm pitch. The thin body allows clips to be mounted side by side for probing adjacent IC pins. They are suitable for use with all HP oscilloscope probes and logic analyzers and have a maximum input voltage of  $\pm 40V$  (dc + peak ac)



HP 10075A 0.5 mm IC Clip Accessory Kit    HP 10467A 0.5 mm IC Clip Accessory Kit

#### HP 10075A and HP 10467A 0.5 mm IC Clip Accessory Kit

These kits include four 0.5mm IC clips (10467-69701) and two dual-lead adapters for use with the HP passive probes. Plug the probe tip into one end of the adapter and connect the IC clips to the other end.

The HP 10075A is compatible with the 10070 family of probes. The HP 10467A is compatible with the HP 10400A family of passive probes. The 1160A and 10400B family of probes include a dual-lead adapter as a standard accessory. For these probes the accessory kit is not required. Order the IC clips 10467-68701.

#### Ordering Information

- E2613A HP Wedge probe adapter, 0.5 mm 3-signal, qty 1
- E2613B HP Wedge probe adapter, 0.5 mm 3-signal, qty 2
- E2614A HP Wedge probe adapter, 0.5 mm 8-signal, qty 1
- E2615A HP Wedge probe adapter, 0.65 mm 3-signal, qty 1
- E2615B HP Wedge probe adapter, 0.65 mm 3-signal, qty 2
- E2616A HP Wedge probe adapter, 0.65 mm 8-signal, qty 1
- E2643A HP Wedge probe adapter, 16-signal, qty 1
- E2644A HP Wedge probe adapter, 16-signal, qty 1
- 10467-68701 0.5 mm IC Clips, qty 4
- HP 10075A 0.5 mm IC Clip Accessory Kit
- HP 10467A 0.5 mm IC Clip Accessory Kit
- HP 10450A SMT probe accessory kit
- HP 10072A SMT probe accessory kit

### HP 10450A SMT Probe Accessory Kit

Assorted accessories include 10 SMT lead IC clips that interface the HP 10400A series miniature probes to the fine-pitch circuitry.



### HP 10072A SMT Probe Accessory Kit

The HP 10072A includes 10 SMT lead clips which adapt the 10070A family of low-cost probes to fine-pitch devices.

